

# ECO-FRIENDLY SMOKELESS NANO GRILL F-2 "WE THINK GREEN"

## USE AND CARE GUIDE

### COMMERCIAL COOKING APPLIANCE Made In KOREA

VOLTAGE 120V, 60Hz  
Single Phase, 1,500W  
Automatic Timer for 60min.  
20AMP Dedicated Circuit



CLEAN & ODORLESS  
ENVIRONMENT



ECO-FRIENDLY  
PRODUCTS



NO MORE SMOKE  
& CHARRED MEAT



SAVE  
ENERGY  
& COST

■ This product is Listed by UL. Representative samples of this product have been evaluated by UL and meet applicable safety standards.

*"Using Nano-carbon lamp that generates far infrared rays in a large quantities it gives clean and comfortable room air without smoke".*



<https://nanotechgrill.com/>  
**Nano Well-Being Grill (USA)**  
18623 Hwy 99, Ste 220 Lynnwood, WA 98037  
Tel. 425-582-9327



**NANOTECH, INC.**  
NANO WELLBEING GRILL

## Quick Start Guide

Disassemble the packed parts and hand wash all detached parts in warm water with dish soap. Dry the parts thoroughly before use.

1. Fill the Drip Pan with water to ~1 inch
2. Reassemble the parts in the same order they were packaged
3. Plug the power cord into a standard electric outlet
4. Fill with 10oz water in the Drip Pan
5. Push the Power Button to turn the unit and then the Fan Button
6. Preheat the grill using a medium or high heat setting for 5-7 minutes
7. Select the cooking temperature, add your food



## Assemble Grill



Place the Base Unit on the table.



Place the Bottom Ring inside the center of the Base Unit.

**\* Ensure that the hook on the Bottom Ring is on the top and not the bottom.**



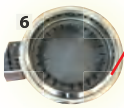
Place the Table Ring on top of the Bottom Ring inside the Base Unit.



Install the Drip Pan  
Fill with water to ~1 inch



Place the Grill Plate



When cooking without the Glass Lid, place the Oil Splatter Guard Ring on top of the Grill Plate (Optional).

## Using the Control Panel



1. Press Power touch Button, Red light is on (Power LED will stay lit)
2. Press Fan touch Button (Fan will run and Fan LED will light up – Fan should be kept running throughout the grilling process)
3. Set the Temperature Button to adjust cooking temperature
4. When you are finished grilling, press the Power or Fan Button to shut down the Unit



# Table of Contents



Safety Information ..... 1p

## How to use

Product Maintenance and Checkout ..... 3p

Product Specification ..... 3p

## Before using

Electricity ..... 4p

Hot to set up a table ..... 5p

Product Size ..... 6p

Assembly Order ..... 7p

Re-assembling after cleaning ..... 8p

## Safety Information

This information is to secure the user's safety and handle this product with safety and to prevent any property damages by preventing accidents caused by the user's fault.



Death or serious wound might occur if you don't follow the information.



Damager on human bodies or property loss might occur if you don't follow the information.



This product operates only on 120V rated voltage.



## How to use



### Product Maintenance and Handling



Caution

when you handle the product, unplug it and put on gloves.

Damages from electric shock and burns might occur.

Handle the product after it cools down completely.



Don't

Do not disassemble, fix, or remodel this produce on your own.

Do not let this product dissembled, fixed, and revised by others who are not the authorized service man.

Damages caused by overheating and malfunction might occur.



Don't

Do not spread water.

Do not water the surface of the product.

This might cause short circuit, electric shock, and fire.



Don't

Do not use flammables like thinner or benzene in cleaning

Flammables like thinner or benzene used for cleaning might cause combustion



Warning

When you handle the product, unplug it and put on gloves.

Damages might occur without gloves.

### Product Specification

Type	Specification	Table Holes
Model	NANO GRILL - F2	<p>100mm</p> <p>360<math>\varnothing</math></p> <p>space 25mm</p> <p>220mm</p>
Electricity Voltage	Single-phase current 120V, 60Hz	
Electricity Output	1500W	
Time	Automatic Timer for 60 min	
Weight	14Kg	

# Before Using

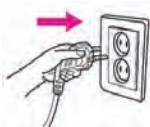
## Electricity



**Warning**

This product operates only on 120 volts. Plug into an electric outlet of 120 volts over 15A

- Make sure that the electricity volts are equal to the description on the sticker on the bottom.
- Be aware of the risk of electric shock and fire.



**Warning**

Do not use a loose outlet or the lug when the electric cord is damaged from shocks.

- Be aware of the risk of electric shock and fire.



**Don't**

Do not touch the electric plug with wet hands.

- Be aware of the risk of electric shock and fire.



**Warning**



**Don't**

Do not unplug by pulling the electric cord.

- Be aware of the risk of electric shock and fire.



**Don't**

Do not put the product on fire without setting up the roasting plate. Do not use this product for the purpose of heater.

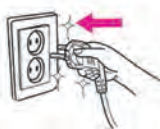
- This might cause fire and malfunction



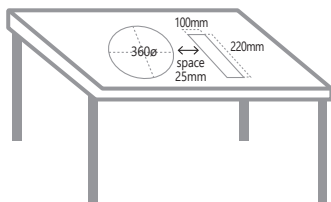
**Warning**

Make sure that the plug is free of attachments and push it down to the end of the outlet.

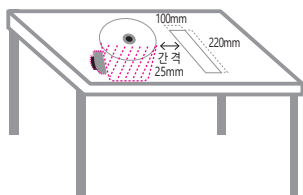
- Be aware of the risk of electric shock and fire.



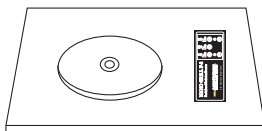
## How to set up a table



1. Put the parts in the order of ④,③,②,① into 360ø



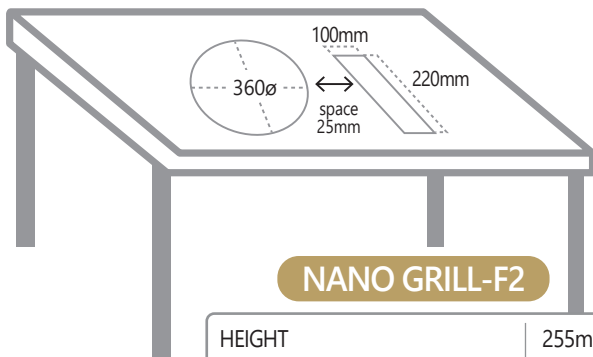
2. Fix the ② Motor into the body.



3. Set up the empty control box from the table bottom toward the surface.

4. Fix the converter box from the table bottom with bolts.

## Product Size



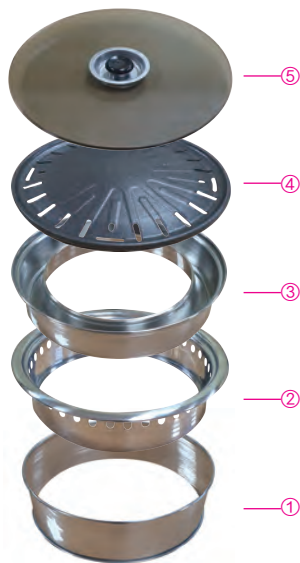
### NANO GRILL-F2

HEIGHT	255mm
EXTERNAL DIAMETER	380mm
INTERNAL DIAMETER	350mm
BOTTOM EXTERNAL DIAMETER	295mm



- ① ROASTER BODY
- ② MOTOR
- ③ CONTROL BOX
- ④ CONVERTER

## Assembly Order



Insert the parts into the ROASTER  
in the order of the number



Control Box

## Re-assembling after cleaning

---



① Bottom ring

1. Set up the dotted line upward.



② Table ring

2. Load ③ into the inside of ② ,  
and put it onto the body.



③ Drip pan

3. Make sure to use 1 portion  
out 2 portion within an oil container.



# CLEANING

**WARNING:** To avoid electrical shock, never clean grill inside with plugged into an outlet or turn on.

## CLEANING THE NANO GRILL F-2 / INSIDE COMPARTMENT

1. The Nano grill F-2 / inside grill compartment base, side back panel can be cleaned using multipurpose disinfectant cleaner with warm soapy water and a nonabrasive or soft cloth by weekly.

Ensure that the manufactureres instructions are followed and that all parts are well rinsed afterwards. Uncleaning inside grill can cause product defects.

2. Switch off the grill from he electricity supply before cleaning(Water/soap) and ensure **the grill is cold.**

3. Gently replace the ramp to allow access to the grill.

**DO NOT FORCE** the element to open or remove. Use right size screw or tools and gently push the grill element back into place after ramp replace.

Handle caefully for glass part with cotton gloves.

Please check YOUTUBE VIDEO instruction!

4. Replace Fuze repeat as same as above.

(120V 15AMP)Please check YOUTUBE VIDEO instruction!

Ensure the screw is firmly in place after cleaning or replacing part.

# WARRANTY INFORMATION

PRODUCT COVERED	All Parts, One Year Unlimited Warranty.
WARRANTY PERIOD	One year from the product purchase date until the first anniversary of the product purchase date.
WARRANTY COVERAGE	Defects in materials and workmanship under normal use.
WARRANTY EXCLUSIONS	Normal wear and tear or misuse/abuse or modification of the product. <i>*Service/Shipping &amp; Handling Charge may applies when warranty expires.</i>
PROOF OF PURCHASE REQUIRED	YES

This warranty is provided by NANOTECH,INC. Nano wellbeing grill(USA) to the original purchaser who purchased the product from an authorized dealer of NANOTECH,INC. Nano Grill F-2.

This warranty is not transferable. Unless prohibited by applicable law, this warranty does not apply to products purchased from unauthorized sellers, including unauthorized internet sites. In order to process a warranty claim that is filed, we require a proof of purchase and images of the damaged product. This warranty gives you specific legal rights, and you may also have other rights which vary from State to State. If you need assistance related to warranty matters, please go to official website (<http://nanotechgrill.com>) or communicate with us at NANOTECH, INC. Nano Wellbeing Grill(USA) Dealer **18623 Hwy 99, ste 220 Lynnwood, WA 98037, 425-582-9327** to file a warranty claim.




**SCAN TO SEE THE INSTALLATION VIDEO**



**Detailed Specifications and Dimensions**

**COMMERCIAL COOKING APPLIANCE NANO GRILL F-2**

PRODUCT	F-2
RATED VOLTAGE	Single-phase alternating current 120V, 60Hz 20AMP Dedicated Circuit
WATTAGE	1,500W
TIMER	60 Minute Automatic Timer Feature
PRODUCT WEIGHT	approx. 26.5lbs
GRILL SIZE	14.713in 



<https://nanotechgrill.com/>

**NANOTECH, INC. Nano Well-Being Grill (USA)**

18623 Hwy 99, Ste 220 Lynnwood, WA 98037 / Tel. 425-582-9327